

Community Meeting

**TDSB Staff Response to the  
Ward 1 Rexdale  
Pupil Accommodation Review Committee's  
Recommendations**

Tuesday, 14 January 2014



This presentation is available on-line at [www.tdsb.on.ca](http://www.tdsb.on.ca).  
Click on [Accommodation Reviews](#) at the bottom of the page.



# Agenda

Time: 6:15 – 7:45 p.m.  
Moderator: Manon Gardner

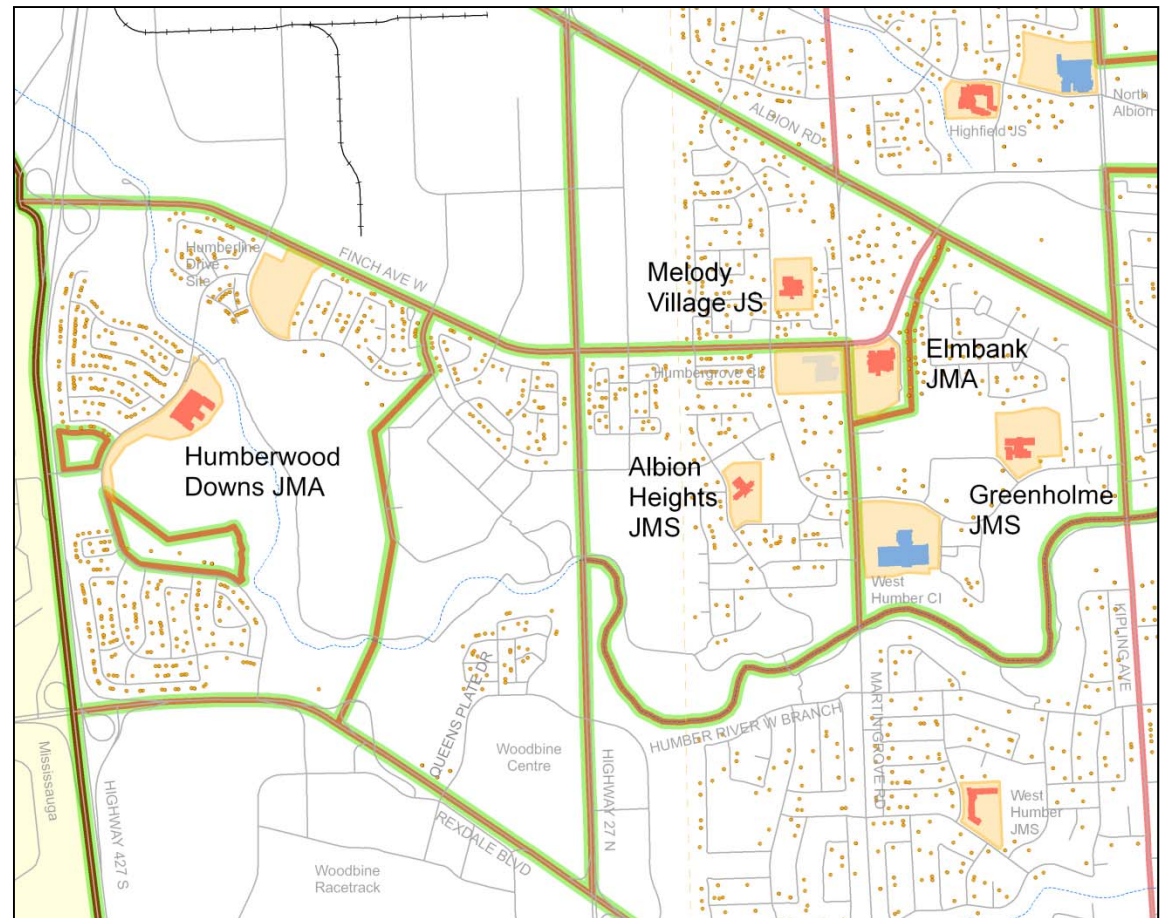
1	Welcome, Introductions and Purpose of the Meeting	<b>Manon Gardner</b> TDSB, Executive Superintendent
2	Background	<b>Andrew Gowdy</b> TDSB, Manager, Planning
3	TDSB Staff Response to the Pupil Accommodation Review Committee's Recommendations	<b>Andrew Gowdy</b> TDSB, Manager, Planning
4	Next Steps	<b>Andrew Gowdy</b> TDSB, Manager, Planning
5	Questions and Answers	Moderated by <b>Manon Gardner</b> TDSB, Executive Superintendent
6	Adjournment	

# Purpose

- To provide staff's response to the Pupil Accommodation Review Committee's (PARC's) recommendations.
- To provide next steps in the process.
- To respond to questions about staff's response.

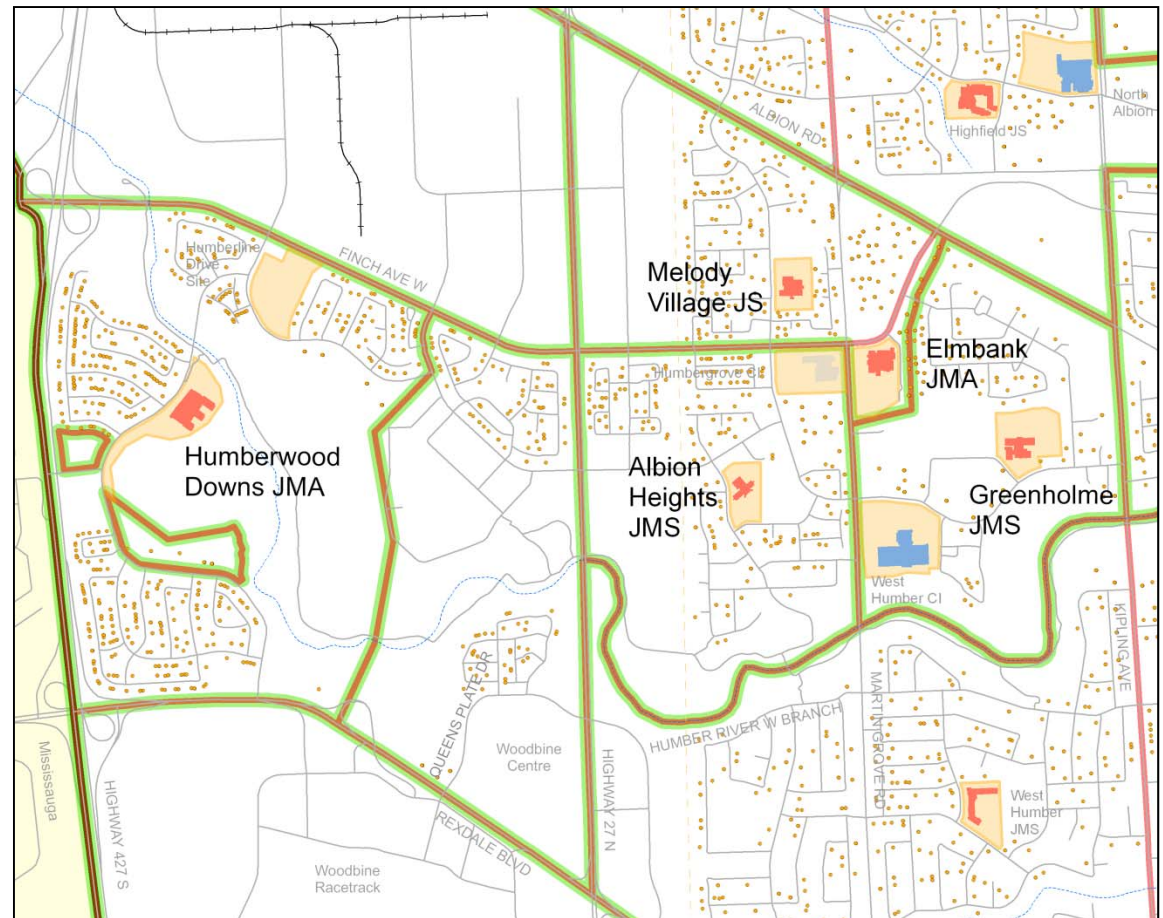
## Background

- **December 2010** – The Board approved the establishment of a Pupil Accommodation Review Committee (PARC) involving 5 schools in north Etobicoke.
- The PARC followed Ministry of Education guidelines.
- The PARC was made up of parents, students, community members and Board staff.



## Background continued

- The PARC was formed to:
  - Reduce distance travelled by students and parents;
  - Increase program options in North Etobicoke; and
  - Plan for future residential development.



## Background continued

- **March to June 2012** – The PARC held 7 working meetings and 4 public meetings. The PARC developed recommendations based on what members heard from the community, from staff and their own discussions. The PARC produced a report and presented it to the Director of Education.
- **October 2012** – The Ministry of Education put a hold on the TDSB’s major school building projects due to construction projects coming in over budget. The Ministry was also concerned that the TDSB was carrying a capital deficit.

## Background continued

- **June 2013** – The Board approved a Three-Year Capital Plan which identified the most urgent facility needs in the system and the funding source to pay for them – the sale of property. Included in the plan were improvements to facilities in this area to implement the recommendations of this review.
- **July 2013** – The Ministry of Education released the hold on the TDSB's major school building projects based on the balanced Three-Year Capital Plan. The TDSB still needs to submit school building projects to the Ministry for their review and approval to proceed.

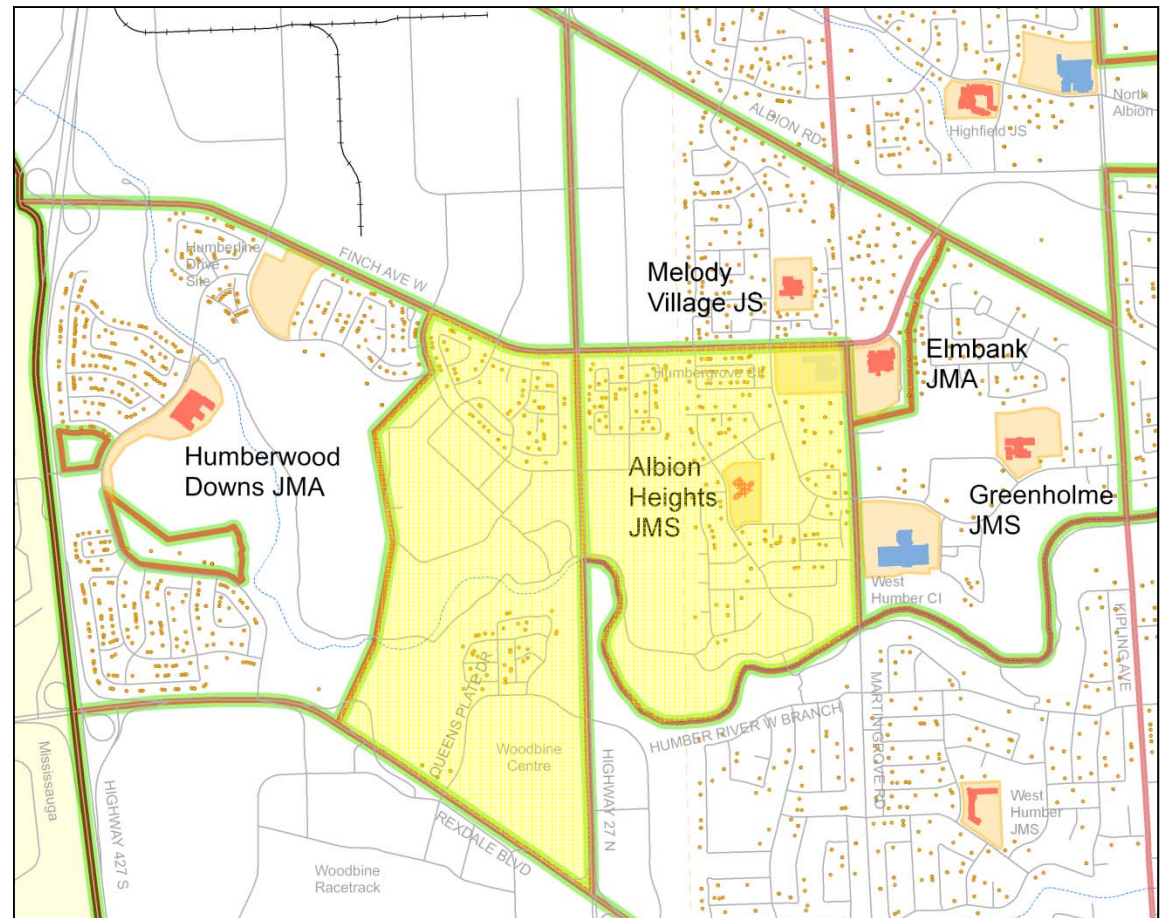
# PARC Recommendations and Staff Response

## PARC Recommendation #1:

- The attendance area for Albion Heights JMS is expanded to include the current Elmbank JMA attendance area west of Highway #27.

## Staff Response:

- Staff supports this recommendation.
- The boundary change will occur for September 2014.
- A five-room port-a-pak (relocatable addition) will be built onto Albion Heights JMS.





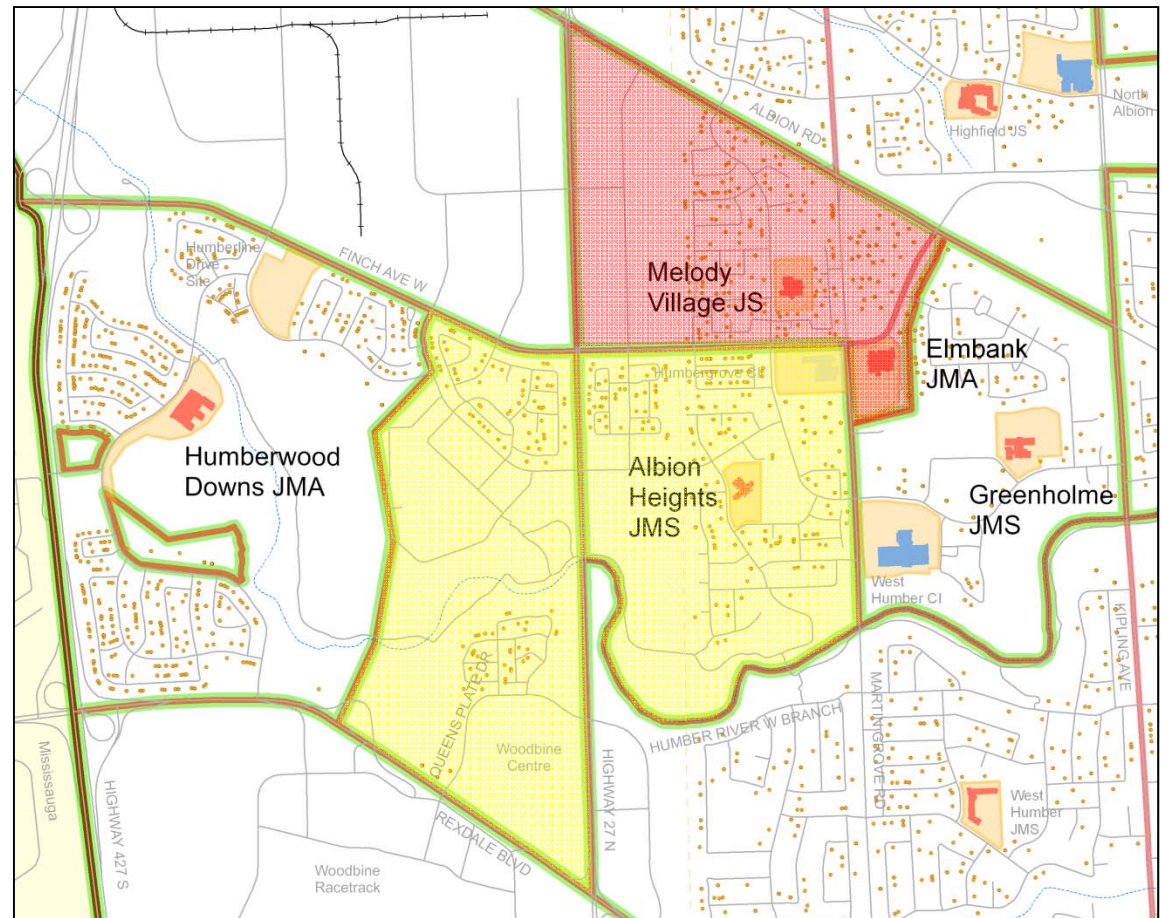
# PARC Recommendations and Staff Response

## PARC Recommendation #2:

- The attendance area for Elmbank JMA is expanded to include the entirety of the current Melody Village JS junior attendance area.

## Staff Response:

- Staff supports this recommendation.
- The boundary change will occur for September 2016.



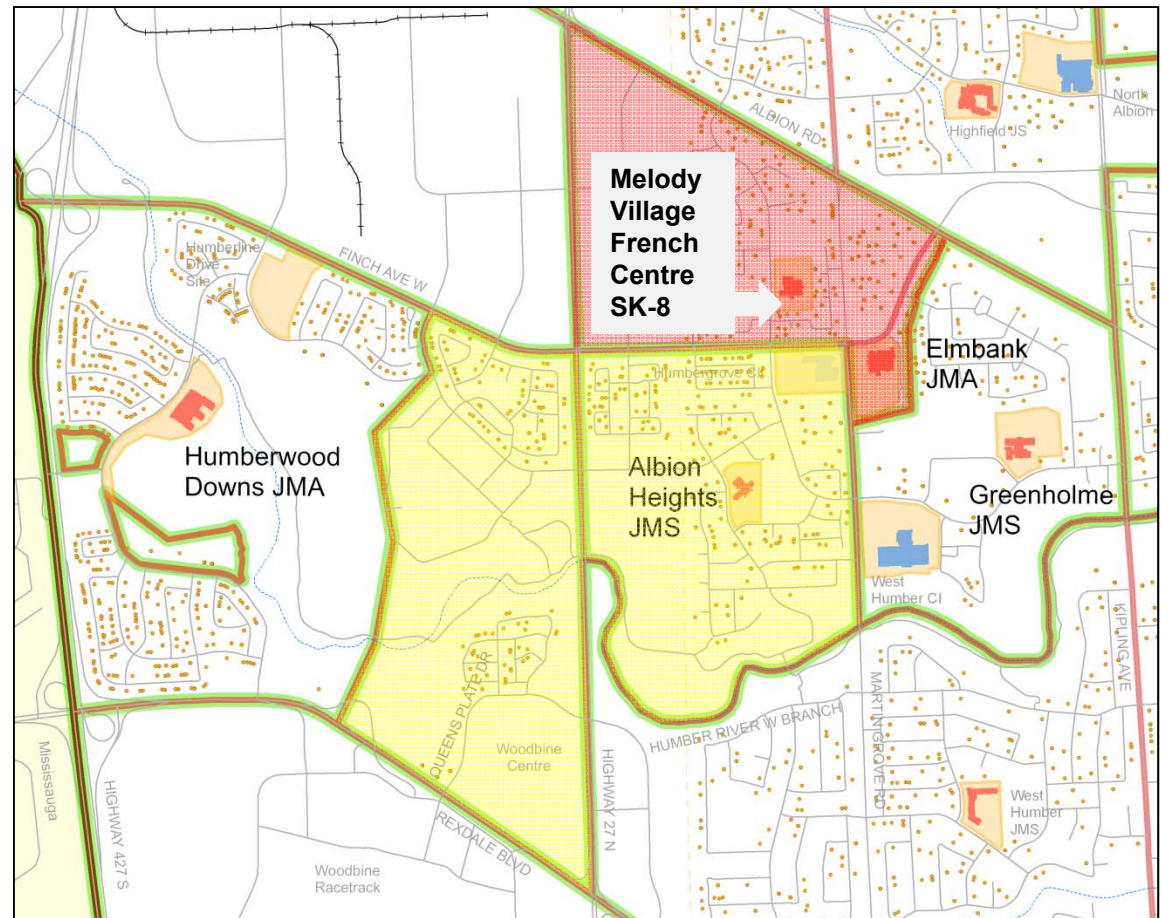
# PARC Recommendations and Staff Response

## PARC Recommendation #3:

- Melody Village JS becomes a French Immersion Centre to serve the FSL needs of the Northwest Etobicoke family of schools.

## Staff Response:

- Staff supports this recommendation.
- The transition of Melody Village JS into an Early French Immersion Centre will begin in September 2014 with two classes of Senior Kindergarten students.



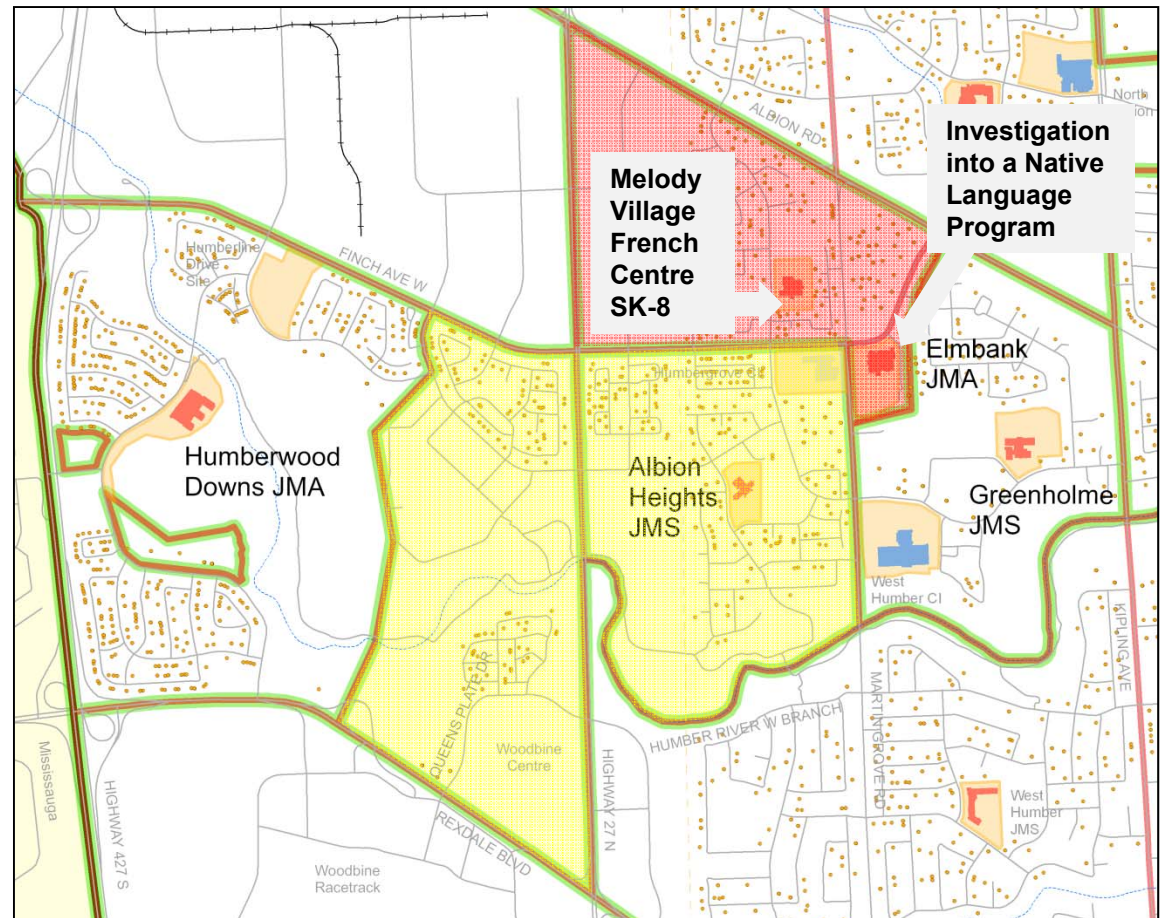
# PARC Recommendations and Staff Response

## PARC Recommendation #4:

- A First Nations Elementary Program - Native Language Program - begins at Elmbank JMA effective September 2013, with a pathway to West Humber CI.

## Staff Response:

- Staff supports examining the feasibility of a new Native Language Program at Elmbank JMA with a pathway to West Humber CI.



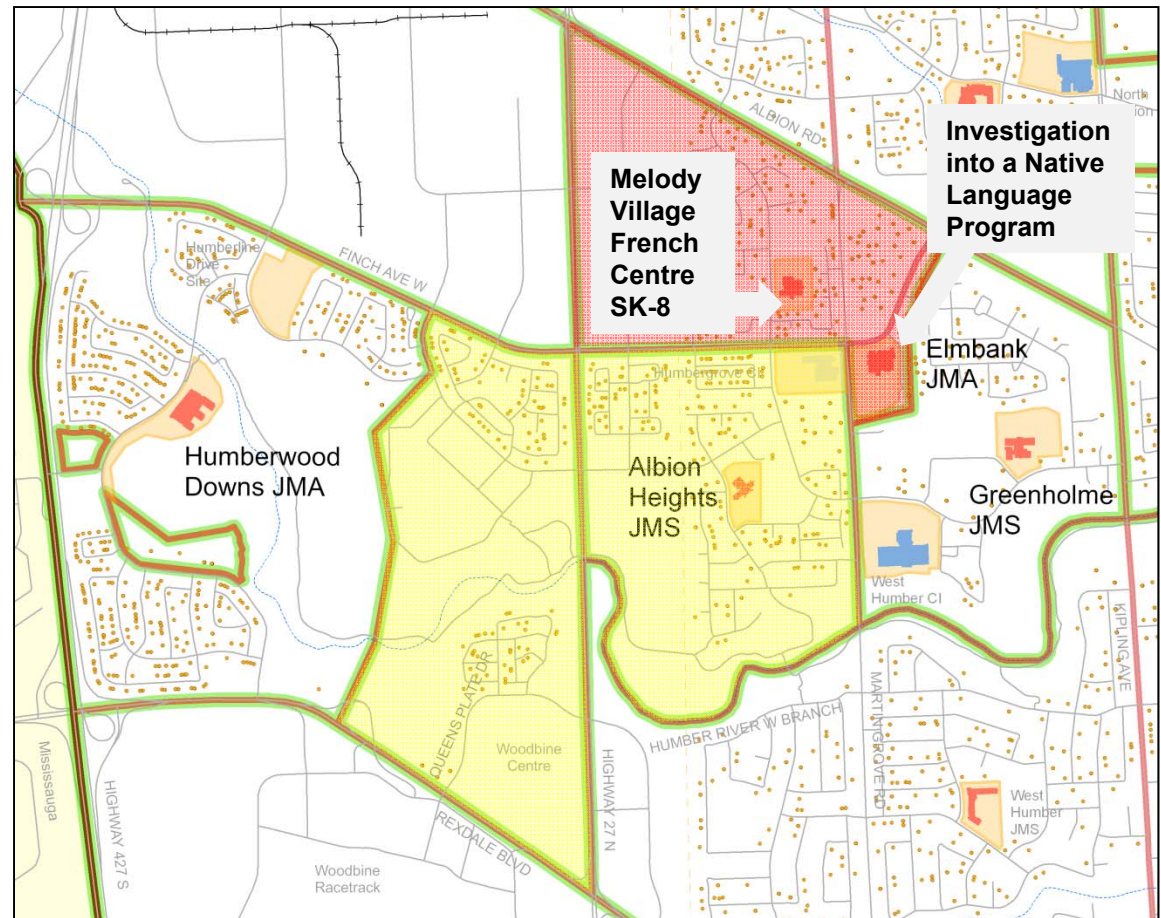
# PARC Recommendations and Staff Response

## PARC Recommendation #5:

- A transition plan is created for the students enrolled in Elmbank JMA and Melody Village JS. The purpose of the transition plan is to allow these students to effectively integrate from Elmbank JMA into Albion Heights JMS and from Melody Village JS into Elmbank JMA.

## Staff Response:

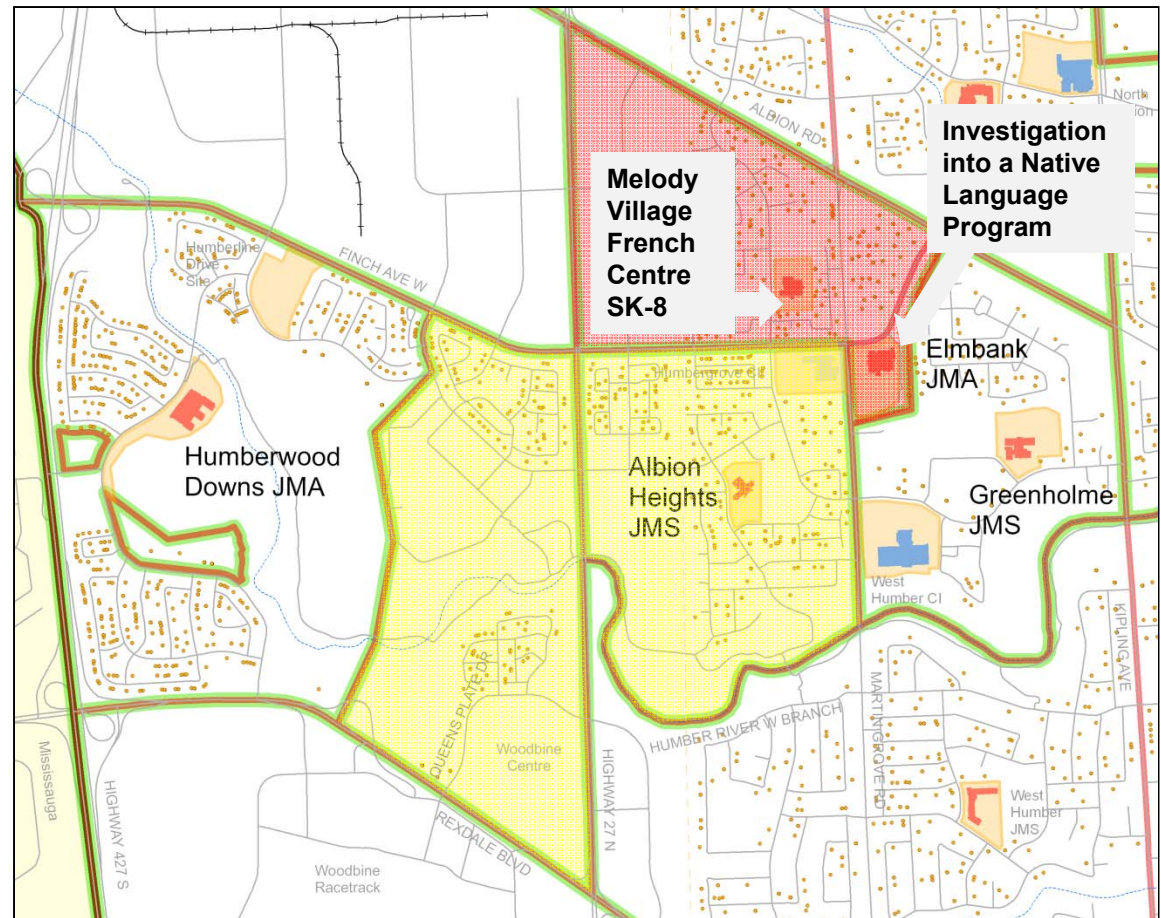
- Staff supports this recommendation.



# PARC Recommendations and Staff Response

## Staff Response to PARC Recommendation #5 continued:

- At Melody Village JS, the Regular Track JK-5 program will be offered for the 2014-15 and 2015-16 school years and will be phased-out and consolidated with Elmbank JMA starting in 2016.
- During the transition, Melody Village JS will continue to register students living within the attendance area for grades offered at the school.
- The full transition will be completed by 2022.



# PARC Recommendations and Staff Response

## Staff Response to PARC Recommendation #5 continued:

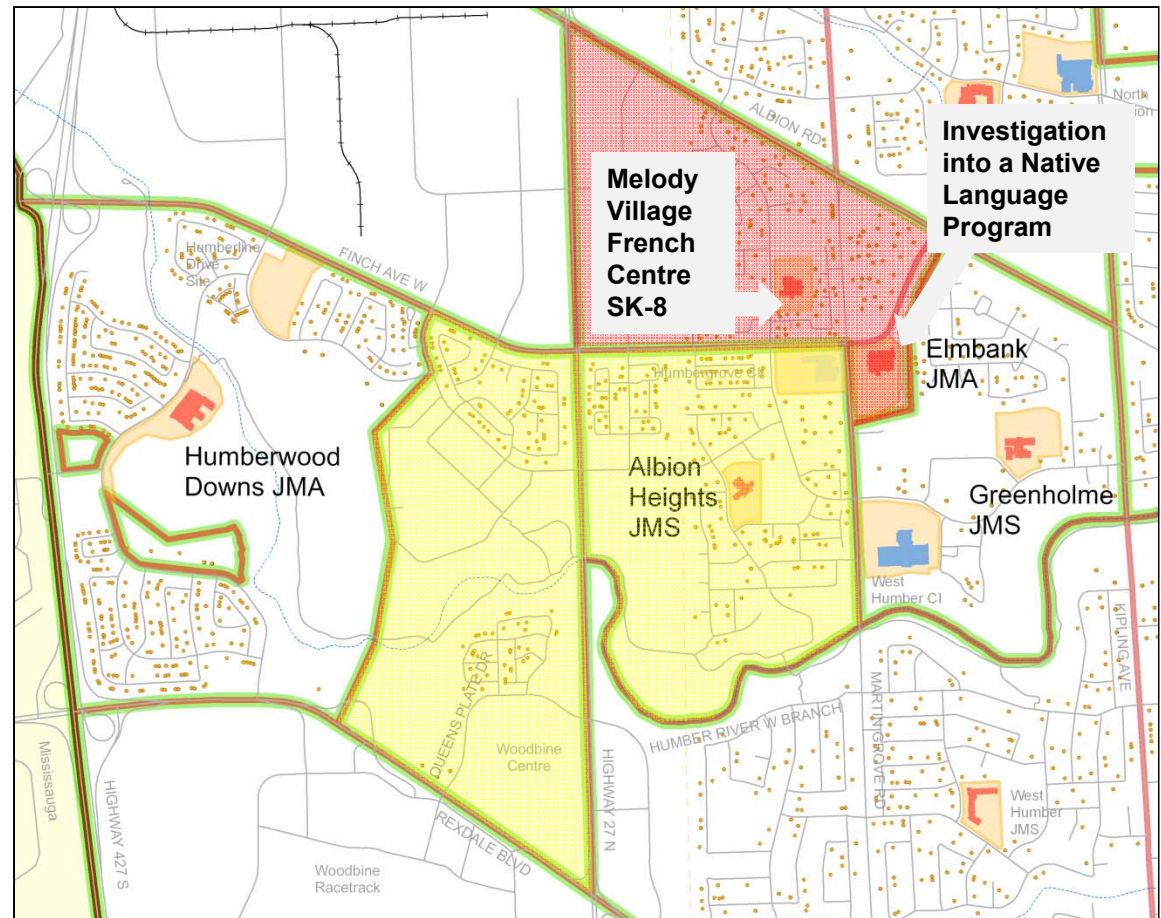
- This table illustrates the transition plan for Melody Village JS.
- The Regular Program will be phased-out and the French Immersion Program phased-in from 2014 to 2022.

Year	Program	JK	SK	1	2	3	4	5	6	7	8
2014	<b>Regular</b> French Immersion	✓	✓ ✓	✓	✓	✓	✓	✓			
2015	<b>Regular</b> French Immersion	✓	✓ ✓	✓ ✓	✓	✓	✓	✓			
2016	<b>Regular</b> French Immersion		✓ ✓	✓ ✓	✓ ✓	✓	✓	✓			
2017	<b>Regular</b> French Immersion		✓	✓ ✓	✓ ✓	✓ ✓	✓	✓			
2018	<b>Regular</b> French Immersion		✓	✓	✓ ✓	✓ ✓	✓ ✓	✓			
2019	<b>Regular</b> French Immersion		✓	✓	✓	✓ ✓	✓ ✓	✓ ✓			
2020	<b>Regular</b> French Immersion		✓	✓	✓	✓	✓ ✓	✓ ✓	✓		
2021	<b>Regular</b> French Immersion		✓	✓	✓	✓	✓	✓ ✓	✓	✓	
2022	<b>Regular</b> French Immersion		✓	✓	✓	✓	✓	✓	✓	✓	✓

# PARC Recommendations and Staff Response

## Staff Response to PARC Recommendation #5 continued:

- Students impacted by the boundary change between Elmbank JMA and Albion Heights JMS will be allowed to continue attending Elmbank JMA until they graduate.
- Bussing will be provided for one year (2014-15).



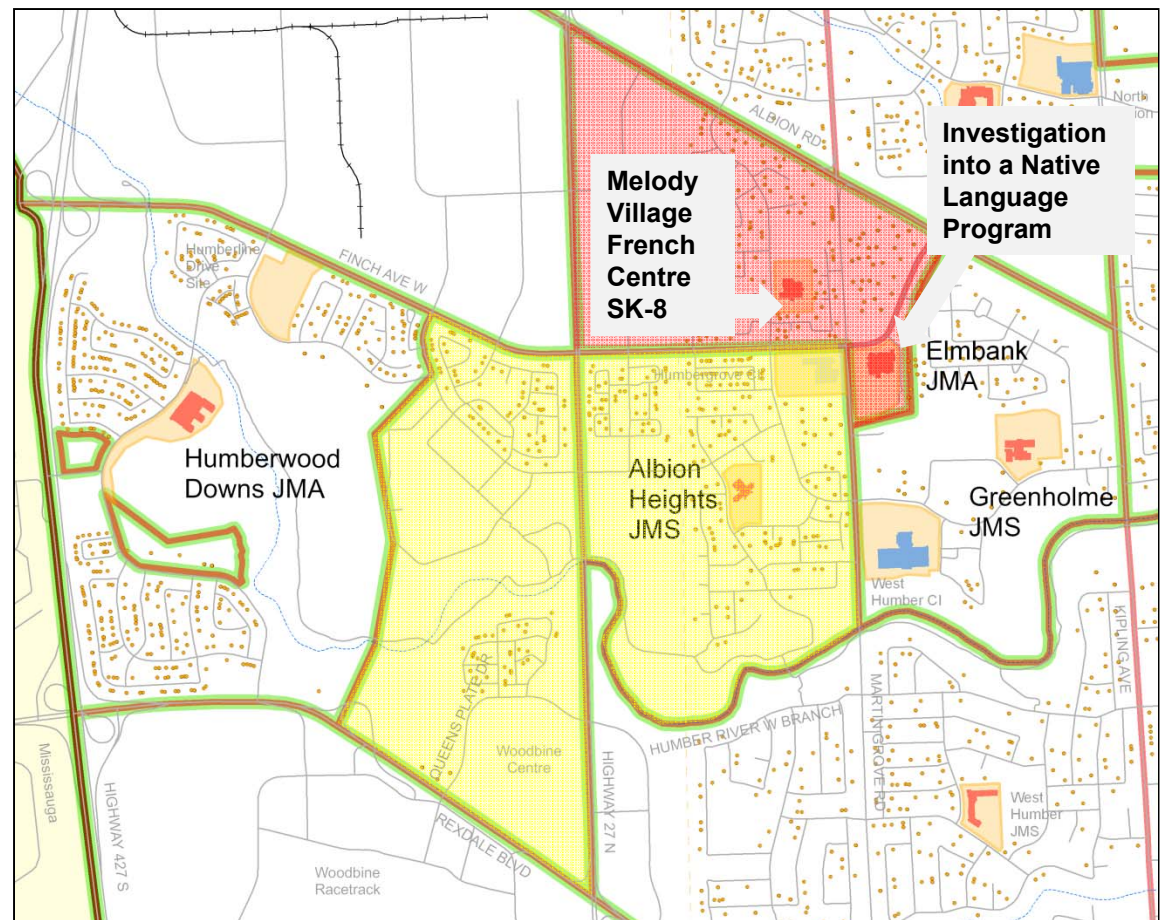
# PARC Recommendations and Staff Response

## PARC Recommendation #6:

- The name change process, as outlined in P047, is initiated immediately in order to reflect the SK-Grade 8 configuration and the French Language Centre at Melody Village JS.

## Staff Response:

- Staff supports this recommendation.





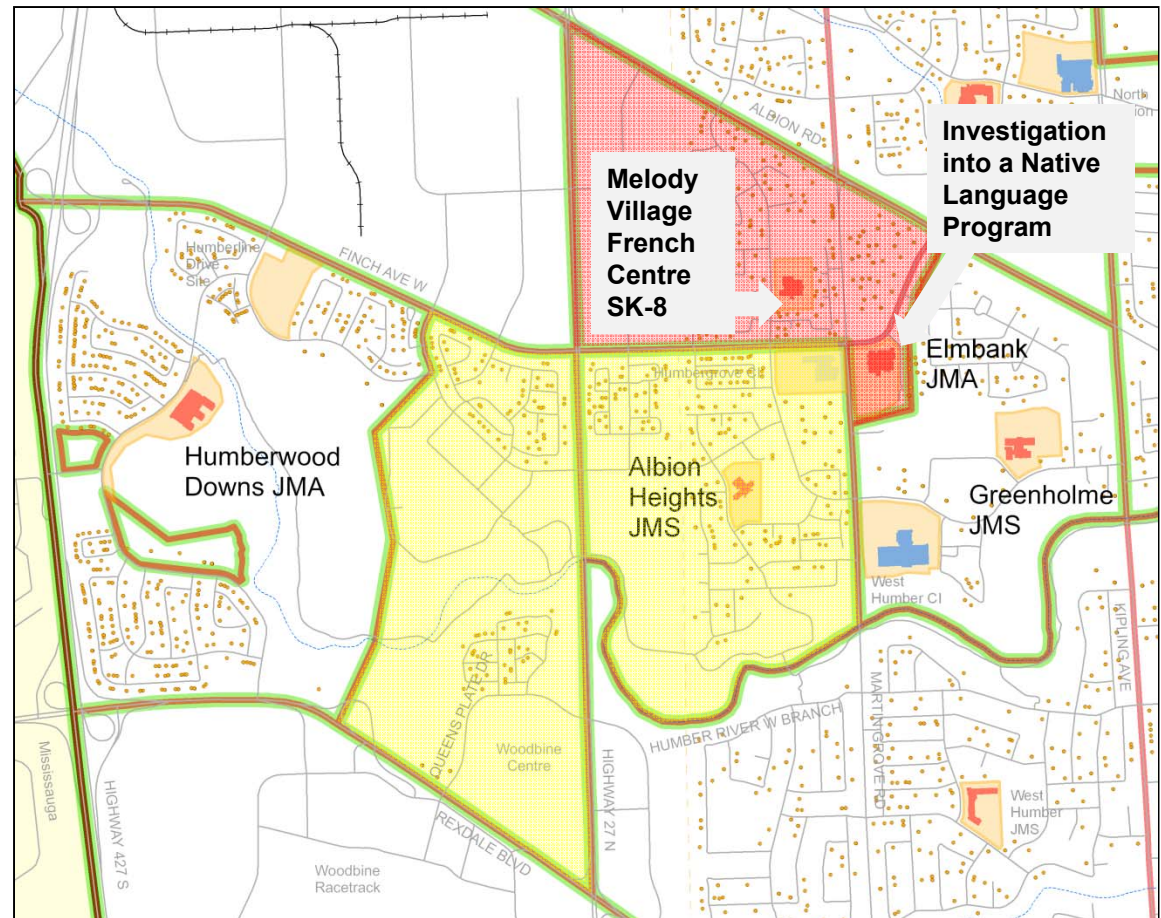
# PARC Recommendations and Staff Response

## PARC Recommendation #7:

- The Implementation date is September 2013.

## Staff Response:

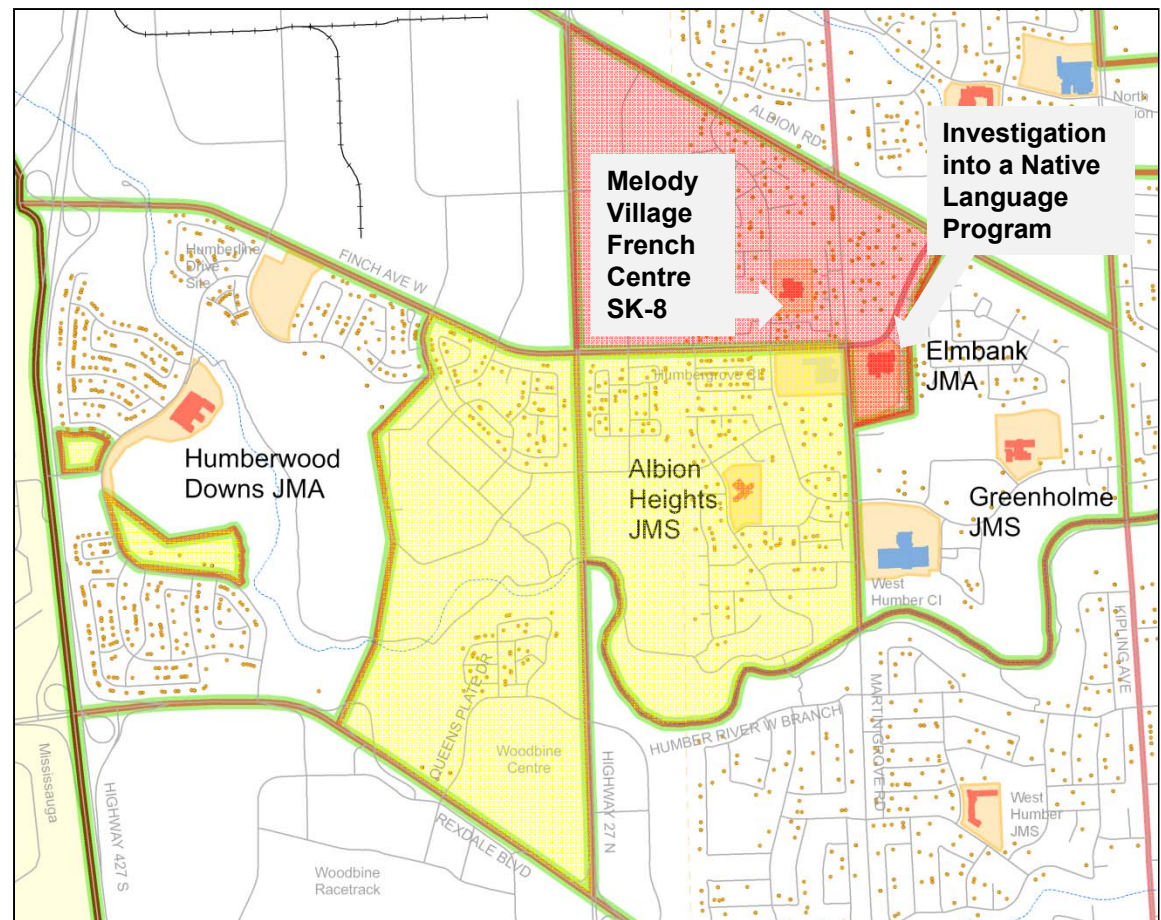
- This implementation date was not possible given the hold on school building projects that the Ministry of Education imposed on the TDSB from October 2012 to July 2013.



# PARC Recommendations and Staff Response

## Additional Staff Recommendation:

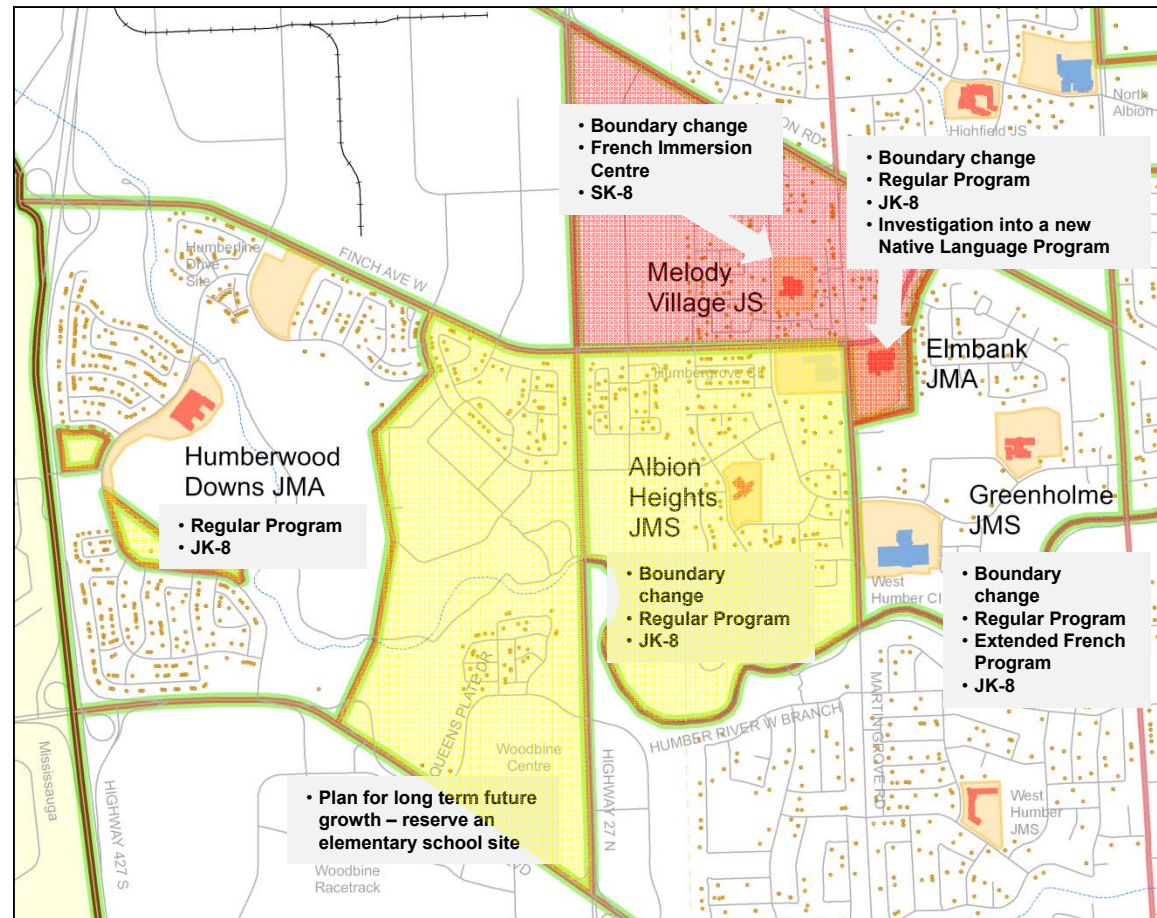
- Students who live in new developments that were previously redirected to Greenholme JMS be redirected to Albion Heights JMS effective September 2014.
- Students impacted by this boundary change be allowed to continue attending Greenholme JMS until they graduate.
- Bussing will be provided for one year (2014-15).



## Summary of the Student Accommodation Plan

### Description

- a) Expand Albion Heights JMS attendance area to include western portion of Elmbank JMA area.
- b) Redirect students from existing residential development from Greenholme JMS to Albion Heights JMS.
- c) Transition Melody Village JS into a French Immersion Centre. Expand Elmbank JMA attendance area to include Melody Village JS junior attendance area.
- d) Investigate starting a Native Language Program at Elmbank JMA.
- e) Plan for long term future growth by looking for a new elementary school site to accommodate the potential new development in the Woodbine Racetrack area.



## Summary of the Student Accommodation Plan

### Enrolments and Capacities

#### Status Quo

School	Capacity	Current 2013-14				Projected 2022-23			
		Grades	Port-ables	Enrol-ment	Utiliz-ation	Grades	Port-ables	Enrol-ment	Utiliz-ation
Albion Heights JMS	490	JK-8	0	330	67%	JK-8	0	297	61%
Elmbank JMA	738	JK-8	0	449	68%	JK-8	0	612	83%
Greenholme JMS	729	JK-8	0	445	61%	JK-8	0	492	67%
Humberwood Downs JMA	1,018	JK-8	0	975	96%	JK-8	0	1,022	100%
Melody Village JS	384	JK-5	0	283	74%	JK-5	0	245	64%
Elmlea JS	480	JK-5	5	543	113%	JK-5	10	664	138%
<b>Total</b>	<b>3,839</b>		<b>5</b>	<b>3,025</b>	<b>79%</b>		<b>10</b>	<b>3,332</b>	<b>87%</b>

#### Recommended Option

School	Capacity	Year of Implementation - 2014				Projected 2022-23			
		Grades	Port-ables	Enrol-ment	Utiliz-ation	Grades	Port-ables	Enrol-ment	Utiliz-ation
Albion Heights JMS	490	JK-8	5	561	114%	JK-8	0	535	109%
Elmbank JMA	738	JK-8	0	338	46%	JK-8	0	641	87%
Greenholme JMS	729	JK-8	0	437	60%	JK-8	0	456	63%
Humberwood Downs JMA	1,018	JK-8	0	1,028	101%	JK-8	0	1,022	100%
Melody Village JS	384	JK-5	0	338	88%	SK-8	0	365	95%
Elmlea JS	480	JK-5	7	593	124%	JK-5	1	467	97%
<b>Total</b>	<b>3,839</b>		<b>12</b>	<b>3,295</b>	<b>86%</b>		<b>1</b>	<b>3,486</b>	<b>91%</b>

## Summary of the Student Accommodation Plan

### Facility Improvements

Completion Year	Facility	Description	Cost Estimate
2014-15	Albion Heights JMS	<ul style="list-style-type: none"> <li>• 5 classroom port-a-pak addition.</li> <li>• Retrofit classroom into purpose built kindergarten room.</li> <li>• Minor retrofits to create suitable classrooms for Developmental Disability program.</li> </ul>	\$2,000,000
2014-15	Humberwood Downs JMA	<ul style="list-style-type: none"> <li>• Retrofit classrooms into purpose built kindergarten rooms (Full Day Kindergarten).</li> <li>• Retrofit classroom for displaced class.</li> </ul>	\$511,000
2014-15	Elmbank JMA	<ul style="list-style-type: none"> <li>• Retrofit classrooms into purpose built kindergarten rooms (Full Day Kindergarten).</li> <li>• Minor retrofits to create suitable classrooms for Developmental Disability program.</li> </ul>	\$709,000
2020-21	Elmbank JMA	<ul style="list-style-type: none"> <li>• Retrofit 3 open rooms into suitable classrooms.</li> <li>• Retrofit classroom into lunchroom.</li> </ul>	\$1,195,000
2020-21	Melody Village JS	<ul style="list-style-type: none"> <li>• Retrofit regular classrooms to create science, technology and art classrooms.</li> </ul>	\$1,692,000
<b>Total</b>			<b>\$6,107,000</b>

## Next Steps

#	Task	Timeline
1	Report to Planning and Priorities Committee (opportunity for public delegations to present to Trustees)	22 January 2014
2	Report to Board	5 February 2014
3	Boundary change between Elmbank JMA and Albion Heights JMS	1 September 2014
4	Boundary change between Greenholme JMS and Albion Heights JMS	1 September 2014
5	Phase-in of French Immersion at Melody Village JS starting with two classes of Senior Kindergarten	1 September 2014
6	Phase-out of Regular Track at Melody Village – Junior Kindergarten students to register at Elmbank JMA	1 September 2016
7	Investigation into offering a Native Language Program at Elmbank JMA	Spring 2014

# Questions and Answers

This presentation is available on-line at [www.tdsb.on.ca](http://www.tdsb.on.ca).  
Click on [Accommodation Reviews](#) at the bottom of the page.

# Adjournment

# Thank you!

This presentation is available on-line at [www.tdsb.on.ca](http://www.tdsb.on.ca).  
Click on [Accommodation Reviews](#) at the bottom of the page.



